



Protect. Enhance. Outperform.

ARCHITECTURAL FINISHES

ACR Smooth Metallic

MONOCHROMATIC ACCENT FINISH SYSTEM



ACR Smooth Metallic | Accent Finish System

Replicate the look of ACM Panels at a fraction of the cost

What is “ACR Smooth Metallic”?

Durex® ACR SMOOTH METALLIC is a specially designed architectural finish system that is intended to replicate metal façade surfaces like ACM Panel Systems.

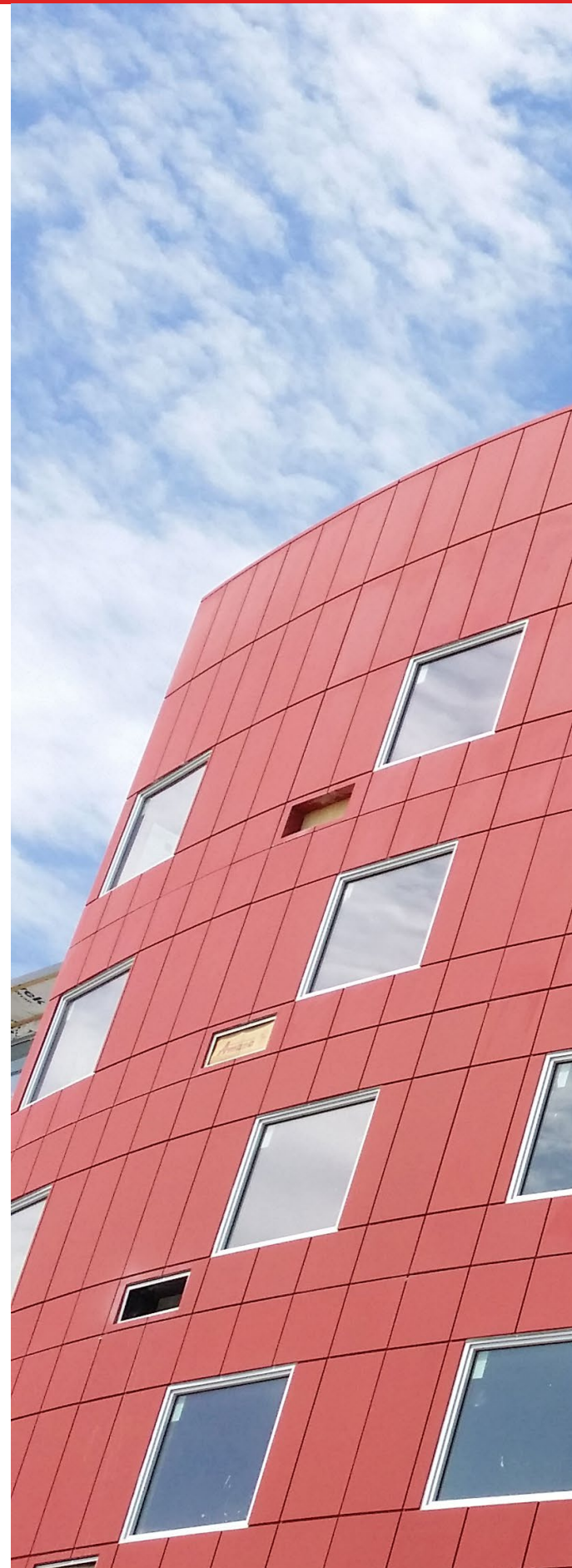
Durex® ACR SMOOTH METALLIC is ideal for creating distinctive architectural features on exterior/interior wall surfaces and can be applied on new and existing buildings. It provides a very flat, smooth, non-reflective surface incorporating reveals and control joints, affording the designer the flexibility to replicate the appearance of panelized façades.

Where can ACR Smooth Metallic be applied?

- Exterior and interior walls
- New constructions or retrofits
- Exceptional option for hotels, healthcare, community centers, and commercial or retail buildings that require a premium accent façade

Benefits of ACR Smooth Metallic

- Non-reflective, monochromatic finish masks imperfections or flaws in former substrate - perfect for retrofits!
- Lightweight design significantly lowers carbon footprint
- Cost-effective alternative to prefabricated metal panels
- Part of a Continuous Insulation EIF System
- Monolithic design over a 3 m² (32 ft²) surface area, offering an array of architectural possibilities
- Exceptional durability
- Unique optical and aesthetical effects through broad range of colours
- Weather resistant with high water repellency
- High water vapour transmission (very breathable)
- Low dirt-pick-up resistance
- High colour stability and UV resistance
- Installed by skilled and trained contractors



Build better with Durabond

We are proud to provide Canadian Architects and Contractors with a premium ACM Panel replication solution.



ACR Smooth Metallic

System Overview

PAGE 4

Design Guidelines

Best practices for superior results

PAGE 5

Application Conditions

Surface conditions and tolerances

PAGE 6

Application Recommendations

Tips to ensure proper installation

PAGE 7

Application Standards

For ACR Smooth Metallic

PAGE 8

Application Method

For ACR Smooth Metallic

PAGE 9

ACR Colour Guide

Standard and available colours

PAGE 10

ACR Smooth Metallic

Smooth, monochromatic accent finish



IDEAL FOR

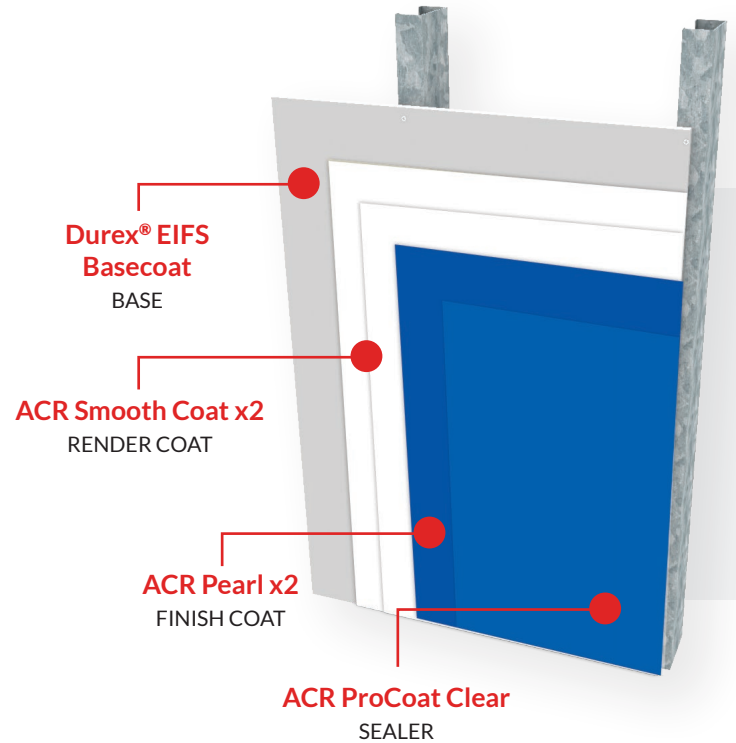
Exceptional option for hotels, healthcare, community centers, and commercial or retail buildings that require a premium accent façade

FEATURES

- Exceptional durability
- Unique optical and aesthetical effects through broad range of colours
- Weather resistant with high water repellency
- High water vapour transmission (very breathable)
- Low dirt-pick-up resistance
- High colour stability and UV resistance

COLOUR AVAILABILITY

Tinted



GREEN DESIGN

Features a lightweight design with a significantly lowered carbon footprint



COMPONENT	PRODUCT	MIX DESIGN	COVERAGE	APPLICATION TEMPERATURE
Base	ACR systems are compatible with any Durex® EIFS Wall System. Please contact your Durabond Representative for additional support.			
Render Coat	ACR Smooth Coat x2 (Trowel Applied)	1 Bag ACR Smooth Coat 5.5 L potable Water	100 ft ² / Bag @ 1/16" thick per coat 9.3 m ² / Bag @ 1.6 mm thick per coat (minimum 2 coats required)	5°C to 40°C
Finish Coat	ACR Pearl x2 (Spray / Roller Applied)	Single component, no mixing required. Stir prior to use.	200 ft ² / Gal per coat 4 m ² / Liter per coat (2 coats required, add. coats optional)	5°C to 40°C
Sealer	ACR ProCoat Clear (Spray / Roller Applied)	Single component, no mixing required. Stir prior to use.	300 ft ² / Gal per coat 6.2 m ² / Liter per coat (1 coat optional)	5°C to 40°C

NOTE: Durex® ACR- SMOOTH METALLIC is designed to have a "flat" non-reflective final finish. It is recommended for a finer finish to introduce additional coats of Durex® ACR PEARL with surface sanding in between coats, as noted in application procedures. A clear coat sealer is not required, but if desired it is recommended that a sample application is done for assessment of final desired appearance prior to application throughout.

Design Guidelines

Best practices for superior results

PANELIZED PATTERN DESIGN APPROACH

Durex® ACR systems require to be installed in “panelized pattern” separated by reveals with limited panel size. This is best coordinated at the design stage of the project.

REVEALS ALIGNMENT

Introduce panelized pattern design by laying out the reveal pattern in alignment with other façade features / components such as fenestration etc.

DETAILED LAYOUT OF REVEALS

Form part of the design and specification documents. Do not leave reveal layout up to the installer.

TRAINED SKILLED INSTALLERS

Durex® ACR systems should be installed only by qualified trained installers.

INSTALLATION PROCEDURES

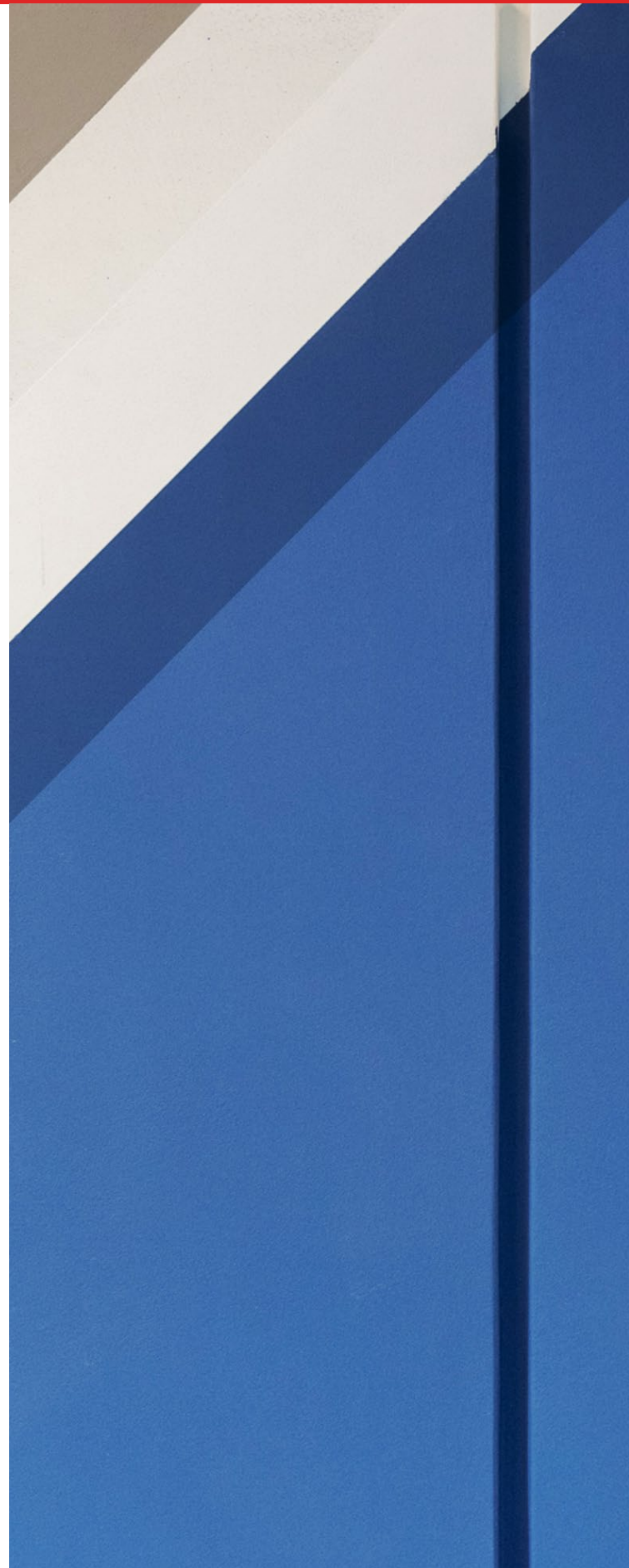
Installation process shall strictly follow the recommended procedures – no exceptions – no substitutions.

MAXIMUM PANEL SIZE

Panel size should be kept to a maximum 3m² (32 ft²) area per panel, with maximum dimension in any one direction of 2.44m (8 ft).

QUALITY CONTROL AT ALL STAGES

Best results are achieved when strict quality control measures are implemented throughout all the phases, starting from design through to complete installation.



Application Conditions

Surface preparations and tolerance guidelines

Durex® ACR Smooth Metallic finish system is ideally intended to be used over the base coat of any of Durabond's Durex® EIFS. Durex® ACR Smooth Metallic can also be applied over the base coat of direct applied stucco systems, however strong consideration must be given to the design and layout of control joints, breaks and reveals to maximize the desired aesthetics of the subject wall.

SURFACE PREPARATIONS

The condition of the base coat surface shall be characterized by explicit tolerances in relation to plumbness, straightness and bowing, with no surface depressions, cavities and/or undulations.

The following tolerances shall be enforced:

DEFLECTION OF WALL

- Deflection of wall shall be 1/360 or 2 mm (3/32"), whichever is smaller.

PLUMBNESS LEVEL

- The wall shall be considered defective and in need for adjustments prior to the application of the basecoat if it differs in level of more than ± 4 mm (5/32") in any 2 m (6.5 ft) length.
- Measurement of deviation from horizontal level shall be $\leq \pm 3$ mm (1/8") in 10 m (32 ft).
- Measurement of deviation from vertical level shall be $\leq \pm 3$ mm (1/8") in 3 m (10 ft).
- Measurement of bow at any location shall be $\leq \pm 4$ mm (5/32") in any 2 m (6.5 ft).

FLATNESS (HORIZONTAL/VERTICAL)

- Measurements of deviation from Horizontal shall be $\leq \pm 3$ mm (1/8") in 3 m (10 ft).
- Measurement of bow (Horizontal flatness) shall be $\leq \pm 4$ mm (5/32") in any 2 m (6.5 ft).
- Measurement of bow (Vertical Flatness) shall be $\leq \pm 4$ mm (5/32") in any 2 m (6.5 ft).

SURFACE DEPRESSIONS

- Surface depression at all component interfaces shall be $\leq \pm 1$ mm (1/32") in any 0.3 m (1 ft).

NO OFFSETS, BULGES AT INTERFACES

SURFACE UNDULATIONS

- Measurement of surface undulations vertically and horizontally, at all interfaces shall be $\leq \pm 1$ mm (1/32") in any 0.3 m (1 ft).



IMPORTANT NOTE: The application of Accent Finish Coating Systems requires extra work, skills, and attention at all levels of surface conditioning and application to achieve the desired aesthetic result. The minimum extra steps required to achieve the desired aesthetic results need to be acknowledged by the specifier, contractor, and applicator.

Application Overview

For ACR Smooth Metallic

ACR SMOOTH COAT APPLICATION

Apply Durex® ACR Smooth Coat, using a stainless steel trowel in a minimum of 2-coat application with the first coat allowed to harden and cure prior to the application of the 2nd coat.

SANDING THE SMOOTH COAT

Sand throughout the dry surface of the Durex® ACR Smooth Coat using a fine sand paper (grit 120 or finer) prior to the application of the successive coat of Durex® ACR SMOOTH METALLIC

ACR PEARL APPLICATION

Apply Durex® ACR PEARL in individual coat application using a brush, roller or spray and allow to dry. A minimum of 2 coats recommended.

NOTE: For a higher quality finish additional coats can be applied allowing each coat to dry prior to the application of the successive coat.

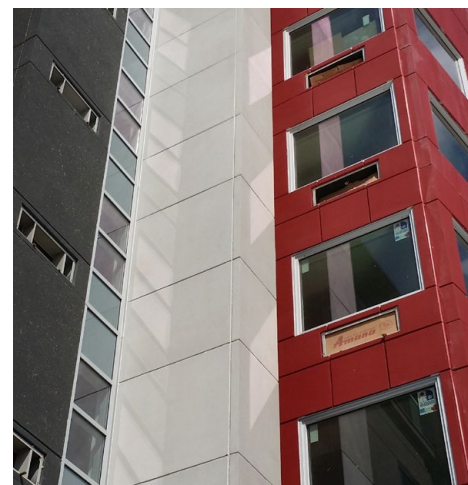
SAND BETWEEN FINISH COATS

In order to achieve a very smooth final surface, the panels can be sanded with a fine sand paper (grit 120 or finer) prior to the application of the successive coat of Durex® ACR PEARL Final coat shall not be sanded.

CLEAR COAT

A coat of Durex® ProCoat Clear can be applied using a low pile roller or fine bristle brush throughout finish areas. Take care to apply in a thin light coat, do not over apply or allow to drip. Durex® ProCoat Clear will introduce a low “matte” sheen to the surface. It is recommended that the application of Durex® ProCoat Clear be assessed through a sample area prior to the final application.

NOTE: The Durex® ACR SMOOTH METALLIC is a high quality fine accent finish. Best results can only be achieved when the applications are conducted by trained skilled applicators. The enclosed short application procedures are for guideline purposes only and are not intended to be detailed instructions for un-trained applicators. Consult with Durabond Representatives for more specific recommendations.



Application Standards

For ACR Smooth Metallic

- The Durex® ACR Smooth Metallic finish coating system shall consist of 2-coats Durex® ACR Smooth Coat followed by 1 coat of Durex® ACR Primer Coat, and 1 or 2 coats of Durex® ACR Pearl to achieve the desired appearance.
- All proper rectification of tolerances and conditioning of the surfaces shall be made prior to application of the Durex® ACR Smooth Metallic finish system.
- Flatness of application surface shall be measured by a 3 m (10 ft) straightedge which can be placed anywhere on the wall in any direction.
- The substrate shall be thoroughly cured for at least 3 days and dry for at least 24 hours.
- The substrate shall be free from ice, snow, dew, and/or frost.
- To control the final texture, the size of the specified work surface area should be broken up in manageable areas not exceeding 3 m² (32 ft²) with no dimension, vertically or horizontally, exceeding 3 m (10 ft).
- The application of all components of the Durex® ACR Smooth Metallic finish system shall completely cover the delineated surface area before any interruption of application.
- Durex® ACR Smooth Coat shall be floated properly and float marks shall not be permitted.
- Durex® ACR-Smooth Coat shall be applied by a team of at least 2 tradesmen. While one tradesman spreads the Durex® ACR Smooth Coat on the substrate, the second tradesman should float the freshly applied Durex® ACR Smooth Coat to the desired texture.
- Durex® ACR-Smooth Coat shall be applied to a smooth, flat and level finish.
- Apply Durex® ACR Smooth Coat to the recommended thickness and surface area coverage.
- The two (2) coats of Durex® ACR Smooth Coat shall be troweled onto the wall with upward strokes. Smooth the freshly applied material into a tight uniform finish with a steel trowel.
- To achieve a consistent surface, wet edges shall be maintained in the application of Durex® ACR Smooth Coat. There shall be no bare or starved areas in Durex® ACR Smooth Coat or in the consecutive coating application.
- Ridges in Durex® ACR Smooth Coat application and in the consecutive finishing coats application shall not be permitted.
- Flatten the Durex® ACR-Smooth Coat with steel trowel or plastic float before it dries.
- Cold joints shall not be permitted.
- Allow a minimum of 24 hours for the curing of Durex® ACR-Smooth Coat
- Apply Durex® ACR Primer of matching colour to Durex® ACR Pearl, over the 2nd coat of the cured and dried Durex® ACR Smooth Coat.
- Allow for a minimum of 24 hours drying prior to the application of Durex® ACR Pearl.
- Apply Durex® ACR Pearl over the dry Durex® ACR Primer in such a way as to create more visual depth.
- Allow a minimum of 24 hours for Durex® ACR Pearl to cure and dry.
- Protect freshly applied finish system from inclement weather conditions until the coating has fully set and cured.
- Prevent, rapid and uneven evaporation.
- Application techniques for all coatings must be consistent over the entire area to create a uniform look.
- Sprayed applications shall be carried out longitudinally as well as laterally over the substrate. Over spraying shall be avoided in order to avoid raised specks around the sprayed area that would give a halo effect on the smooth surface.
- The use of proper tools play a major role in the quality of the finished surfaces. Please refer to Durabond's specified tools.
- Any finished section of the wall should maintain a similarity throughout the wall when viewed in totality.
- Project specifications shall coincide with product specifications.
- Durabond's technical team can provide expert advice and support during the application phase.

Application Method

Ensure proper application of ACR Smooth Metallic

DESCRIPTION

Durex® ACR SMOOTH METALLIC is a specially designed architectural finish system that is intended to replicate metal façade surfaces when applied over the base coat of our Durex® EIF Systems. Durex® ACR SMOOTH METALLIC is ideal for creating distinctive architectural features on exterior/interior wall surfaces and can be applied on new and existing buildings. It provides a very flat and smooth non-reflective surface incorporating reveals and control joints, affording the designer the flexibility to replicate the appearance of panelized facades.

SUBSTRATE REQUIREMENTS

It is an ideal option for application over the base coat of our Durex® EIF Systems. Durex® ACR SMOOTH METALLIC can also be applied over the base coat of direct applied stucco systems, however strong consideration must be given to the design and layout of control joints, breaks and reveals to maximize the desired aesthetics of the subject wall.

DESIGN & APPLICATION GUIDELINES

- **Introduction at Design Stage** – best results are achieved when system is introduced at design stage
- **Panelized Pattern Design Approach** – Durex® ACR systems require to be installed in “panelized pattern” separated by reveals with limited panel size. This is best coordinated at the design stage of the project.
- **Reveals Alignment with Other Architectural Features** – introduce panelized pattern design by laying out the reveal pattern in alignment with other façade features / components such as fenestration etc.
- **Detailed Layout of Reveals** – Form part of the design and specification documents. Do not leave reveal layout up to the installer.
- **Trained Skilled Installers** – Durex® ACR systems should be installed only by qualified trained installers.
- **Installation Procedures** – installation process shall strictly follow the recommended procedures – no exceptions – no substitutions.
- **Maximum Panel Size** – should be kept to a maximum 3m² (32 ft²) area per panel, with maximum dimension in any one direction of 2.44m (8'-0").
- **Quality Control at All Stages** – Best results are achieved when strict quality control measures are implemented throughout all the phases, starting from design through to complete installation.

APPLICATION STEPS

1. Apply Durex® ACR Smooth Coat, using a stainless steel trowel in a minimum of 2 coat application with the first coat allowed to harden and cure prior to the application of the 2nd coat.
2. Sand throughout the dry surface of the Durex® ACR-Smooth Coat using a fine sand paper (grit 120 or finer) prior to the application of the successive coat of Durex® ACR SMOOTH METALLIC
3. Apply Durex® ACR SMOOTH METALLIC in individual coat application using a brush, roller or spray and allow to dry. A minimum of 2 coats recommended. NOTE: For a higher quality finish additional coats can be applied allowing each coat to dry prior to the application of the successive coat.
4. In order to achieve a very smooth final surface, the panels can be sanded with a fine sand paper (grit 120 or finer) prior to the application of the successive coat of Durex® ACR SMOOTH METALLIC Final coat shall not be sanded
5. Durex® ACR SMOOTH METALLIC is designed to have a “flat” non-reflective final finish so to minimize visible substrate undulations / deviations.
6. An optional coat of Durex® ProCoat Clear can be applied using a low pile roller or fine bristle brush throughout finish areas. Take care to apply in a thin light coat, do not over apply or allow to drip. Durex® ProCoat Clear will introduce a low “matte” sheen to the surface. It is recommended that the application of Durex® ProCoat Clear be assessed on a sample area prior to final application.

COMPONENT	PRODUCT	MIX DESIGN	COVERAGE	APPLICATION TEMPERATURE
Render Coat	ACR Smooth Coat x2	1 Bag ACR Smooth Coat 5.5 L potable Water	100 ft ² / Bag @ 1/16" thick per coat 9.3 m ² / Bag @ 1.6 mm thick per coat (minimum 2 coats required)	5°C to 40°C
Finish Coat	ACR Pearl x2	Single component, no mixing required. Stir prior to use.	200 ft ² / Gal per coat 4 m ² / Liter per coat (2 coats required, add. coats optional)	5°C to 40°C
Sealer	ACR ProCoat Clear	Single component, no mixing required. Stir prior to use.	300 ft ² / Gal per coat 6.2 m ² / Liter per coat (1 coat optional)	5°C to 40°C

Durex® ACR Smooth Metallic

Durex® ACR SMOOTH METALLIC is ideal for creating distinctive architectural features on exterior/interior wall surfaces and can be applied on new and existing buildings. It provides a very flat, smooth, non-reflective surface incorporating reveals and control joints, affording the designer the flexibility to replicate the appearance of panelized façades.



COLOUR:
SM-2095KG
West Coast

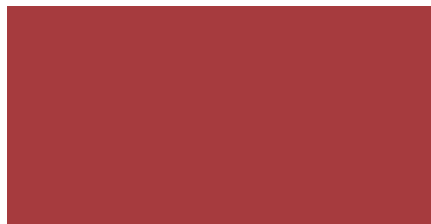
Printed samples represent actual finish colours as closely as possible. Colour appearance may vary by texture, lighting and method of application. Always request a textured sample before ordering.



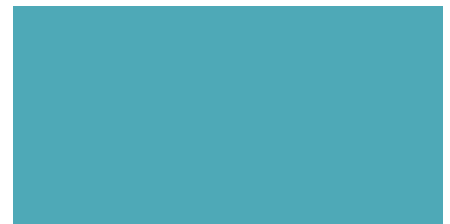
Bright accent colors marked with KG require Durex Kolor Gard for enhanced fade resistance and durability. Use of Kolor Gard is mandatory to maintain color vibrancy over time. For application details, product specifications, and pricing, consult your Durabond representative before proceeding.



SM-2100KG ISLAND RESORT



SM-2105KG RUBY RED



SM-2110KG TIDE WATER



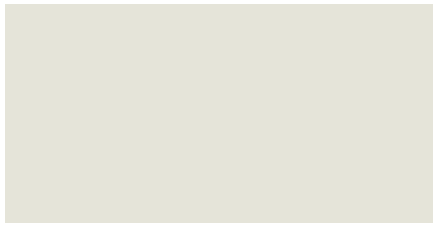
SM-2070 LICORICE



SM-2090KG GAZPACHO



SM-2095KG WEST COAST



SM-2025

ALPINE WHITE



SM-2080

SMOKE



SM-2050

LAMB SKIN



SM-2030

SILVER STREAK



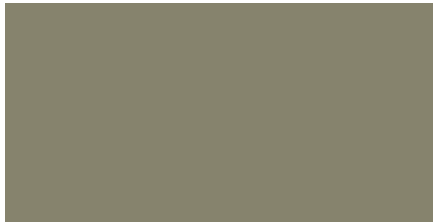
SM-2035

SILVER FOX



SM-2055

SOMERSET TOUPE



SM-2120

ST PETER SAGE



SM-2060

CAMEROON GREY



SM-2065

COUNTRYSIDE



SM-2045

WRIGHT STONE



SM-2085

TUSCANY



SM-2125

NEVADA SUN



SM-2130

NUTMEG



SM-2115

TETON RANGE



SM-2135

TUDOR BROWN



SM-2145

COOL STEEL



SM-2040

CHARCOAL GREY



SM-1500

BLACK



Protect. Enhance. Outperform.



The recommendations and information in this chart/document are for the application of Durex® products manufactured by Durabond, and are based on practical knowledge for general site conditions and uses. This chart is to be used as a reference guide only to identify and display the various products for general, non-site specific applications for a variety of installations. Differences in site conditions, preparations, materials are continuously variable and unknown.

As such, no warranty, guarantee or legal binding relationship is implied whatsoever with these products and systems and no guarantee can be made to their performance. In addition, preparation and condition of the substrate is of such utmost importance that a Durabond Technical Representative must be notified prior to installation of any of the aforementioned products and/or systems.

An installer must always prepare the surface to the recommendations found on the current data sheet of each product written and produced by Durabond Technical Coatings Limited. These data sheets can be obtained from Durabond's website, www.durabond.com, or by contacting a Technical Sales Representative directly.

TORONTO OFFICE

55 Underwriters Road, Toronto, ON M1R 3B4
T (416) 759-4474 | F (416) 759-4470

MISSISSAUGA OFFICE

6178 Netherhart Road, Mississauga, ON L5T 1B7
T (905) 565-9283 | F (905) 565-9365

WESTERN CANADA OFFICE

14604 124 Ave NW, Edmonton, AB T5L 3B3
T (780) 451-6364 | F (780) 453-9056

TOLL FREE

TF 1 877 387-2266 | E info@durabond.com

durabond.com